



Windows Movie Maker Tutorial #24

Windows Movie Maker (WMM) is a program that is offered on Windows. It allows you to create videos that are viewable on DVD and WMP. You can also share these videos online by uploading them to websites such as www.youtube.com.

Finding Windows Movie Maker

- (1) Left click on "Start"
- (2) Left click on "All Programs"
- (3) Left click on "Windows Movie Maker"

Importing Images for Movie

- (1) Left click on "Import Pictures"

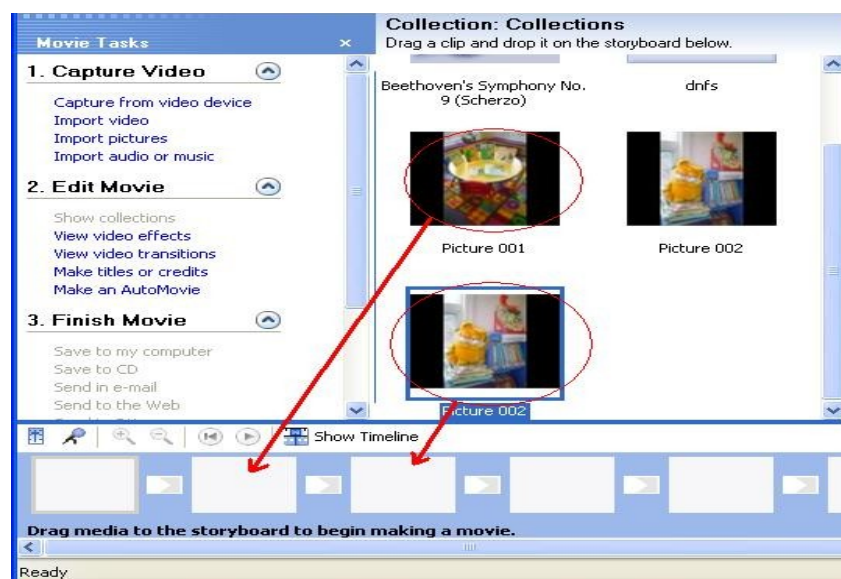


- (2) Find your pictures you wish to import. When you do, left click on the image.
- (3) Left click on "Import"
- (4) The image will appear in the Collection page

*This is the same procedure for Importing Video

Adding Images to the Storyboard

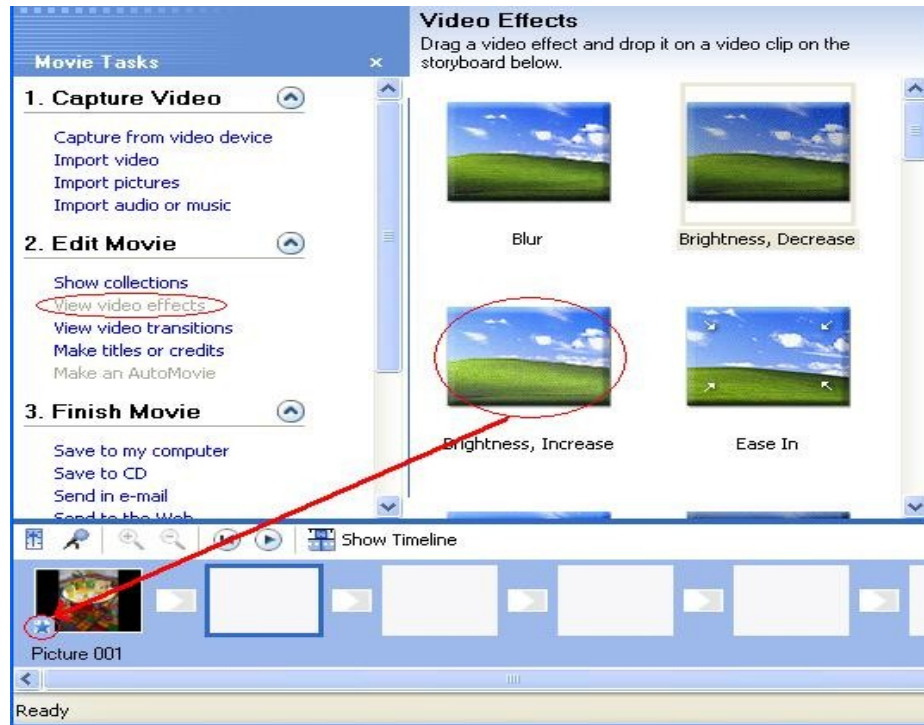
- (1) Choose the image you are going to be using in your movie
- (2) Left-hold-drag image* and drop into the larger sized boxes in the storyboard (the image will be seen in the box)



- (3) Continue following this procedure until you have all the photo you will be using in the movie

Adding Video Effects

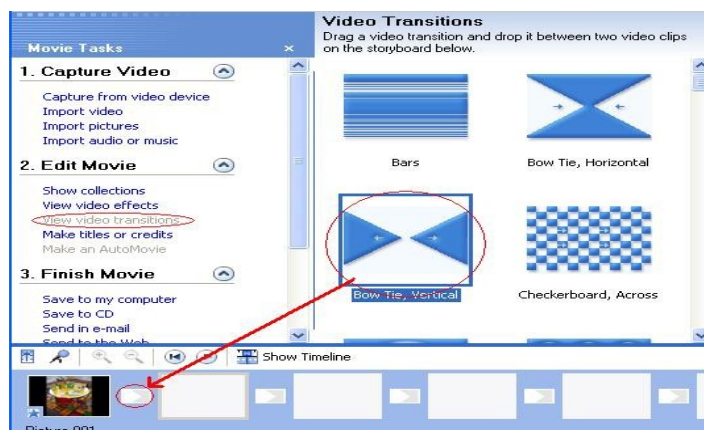
- (1) Left click on “View Video Effects”
- (2) Choose desired effect (double-click on the effect to see it being played on the right side of the program)
- (3) Left-hold-drag* effect into the small box (in between each slide) in the Storyboard and drop the effect into the box



- To view effect in your videos, left click on the “Play” button located on the right side of your screen
- To use a different video effect on your movie, left-hold-drag* new effect and drop it on top of the old effect. This will eliminate the old video effect.

Adding Video Transitions

- (1) Left click on “View Video Transitions”
- (2) Choose desired video transition, left-hold-drag* image and drop it into the storyboard



Changing Speed in the Timeline

- (1) Left click on “Show Timeline” (this will show everything in your Storyboard in the Timeline)
- (2) Choose a clip you wish to lengthen or shorten.
- (3) Left click on the **red arrow** and drag the clip away to lengthen clip
Left click on the **red arrow** and drag the clip toward to shorten clip



- To move the image in the Timeline somewhere else you must change its location in the Storyboard and it will change in the Timeline

Adding Audio in WMM

- (1) Left click on “Import Audio or Music”
- (2) Choose the file through “Look in:”. Left click on image and left click on “Import”
- (3) The audio file will appear in the “WMM Collection”
- (4) Left click on “Show Timeline”
- (5) Left-drag-hold* the audio file into the “Audio/Music” line

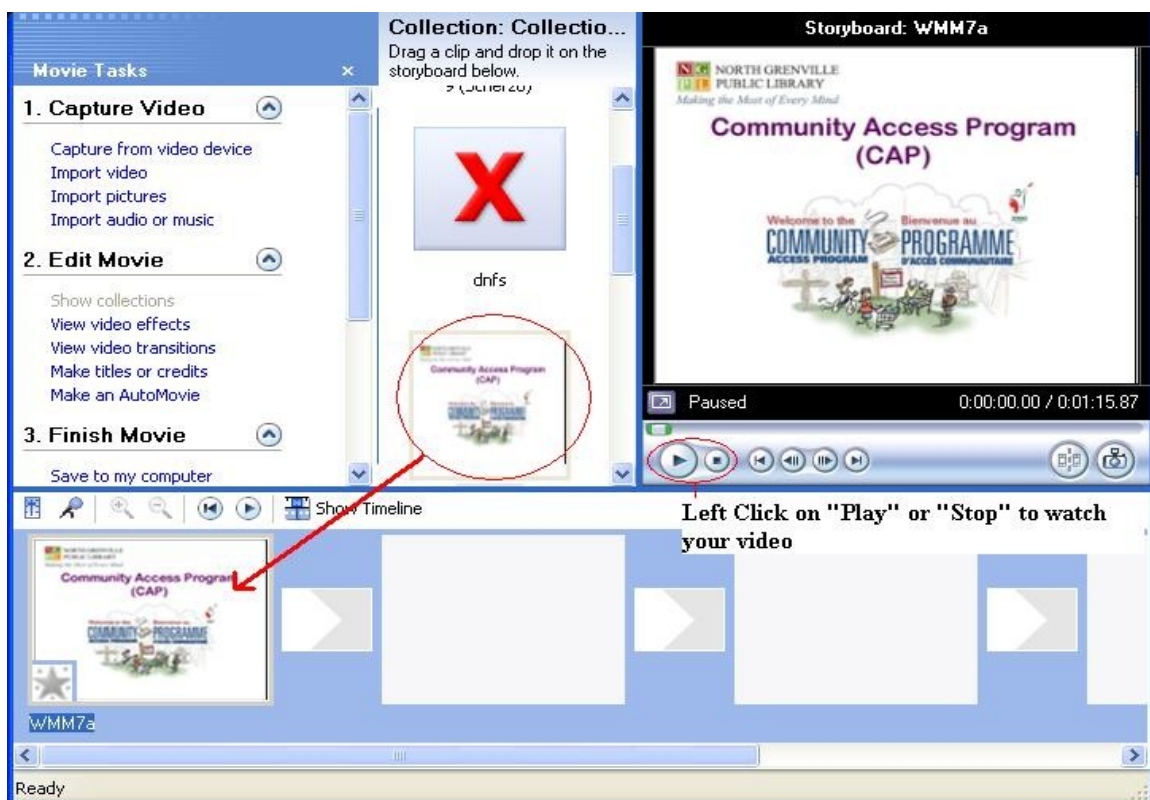


- To trim the audio file, you must use the **red arrows** at the end of the clip and drag forward to expand and drag backward to shorten the audio file

Importing Slides as JPEGs into WMM

If you wish to have a slide that includes both images and words, you can create a slide and import it into Windows Movie Maker. That way it will eliminate having to fuss with the always occurring formatting issues. This demonstration may vary according to the type of PowerPoint you will be using. To begin simply,

- (1) Create a slide using a slide maker
- (2) Once you are done, left click on “file” and left click on “Export” or “Save as...”
- (3) In the “Save in:” drop box choose “My Documents>My Pictures”
- (4) In “File Name:” type in the name of the slide
- (5) In the “File Format:” drop box, left click on “JPEG”
- (6) Left click on “Save”
- (7) The “JPEG Options” page will appear. Left click on “OK”
- (8) Minimize the PowerPoint software (located on the top right hand side of the screen) and open Windows Movie Maker project
- (9) Left click on “Import Pictures”
- (10) In “Look in:” left click “My Documents>My Pictures” in the drop box
- (11) Choose the slide you created by left clicking once and left clicking on “Import”
- (12) The slide will appear in your “WMM Collection.” To put it in your storyboard, left-hold-drag image and drop it into the desired storyboard box



*Left-drag-hold: To move an object from one location to another, hold down the left side of your mouse while dragging the object. Once the object is on the location it will be placed you must let go of the mouse. This will move the object to its new location.

**For more help on Windows Movie Maker, simply left click on “Help” and “Help Topics” in the program.